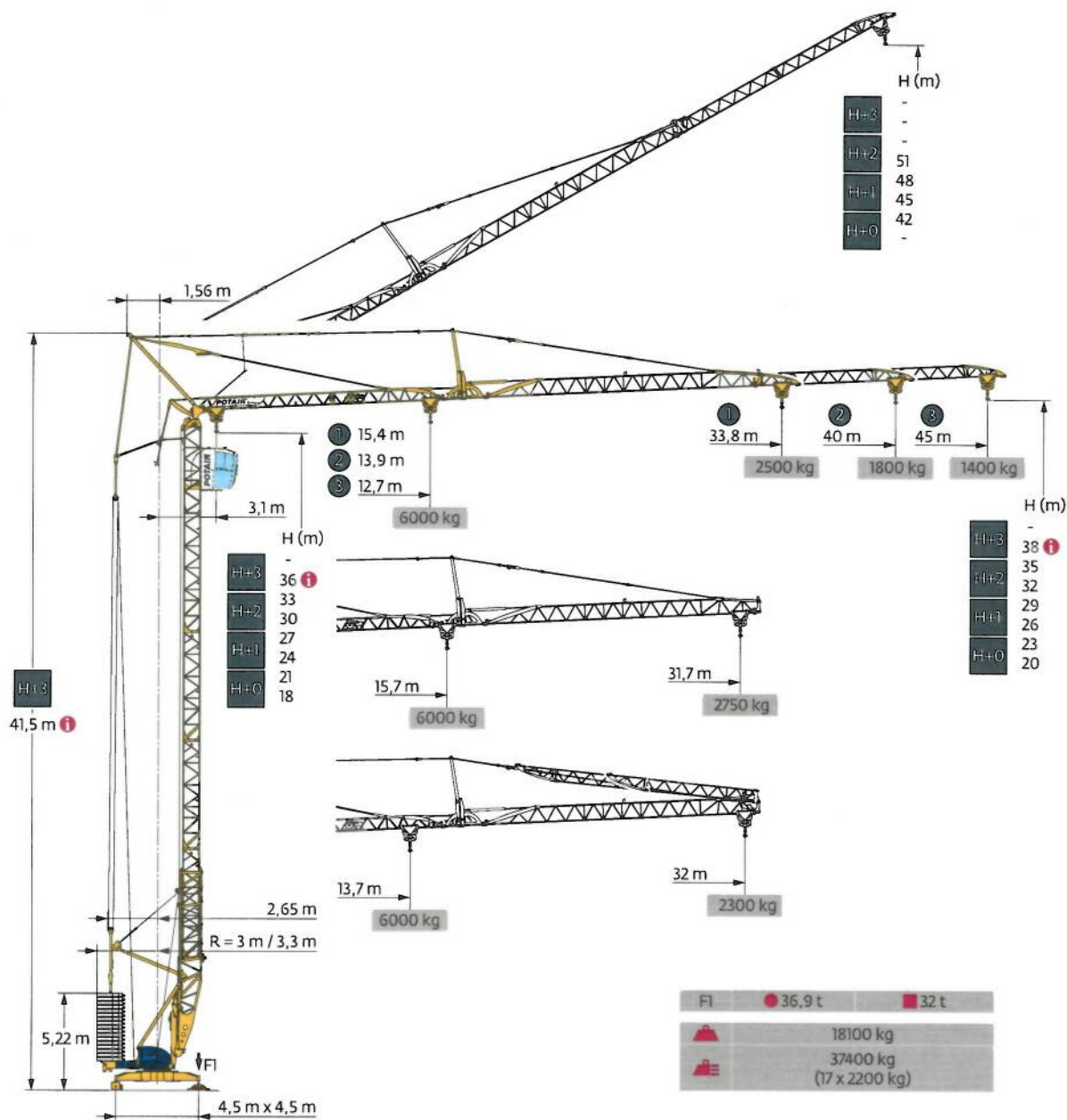
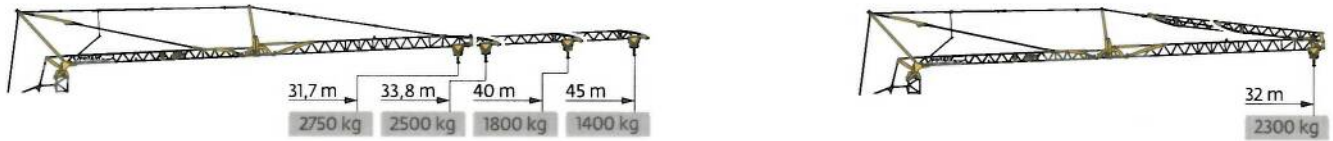


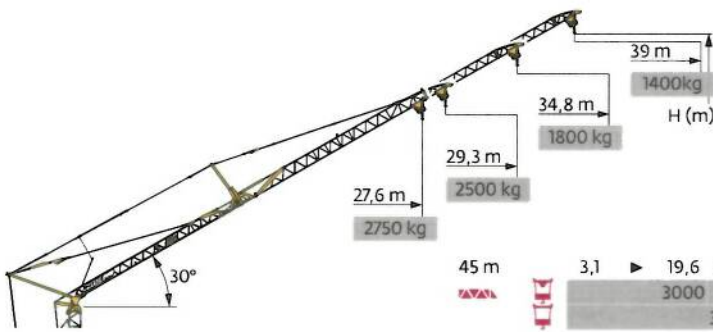
Potain Igo T 85 A



Courbes de charges / Lastkurven / Load curves / Curvas de cargas / Curve di carico
 Curvas de carga / Кривые нагрузок

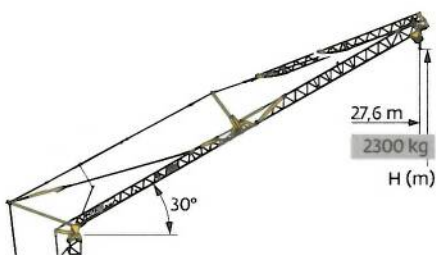


45 m	3,1	▶	12,7	14	16	18	20	22,4	23,7	24	26	28	30	32	34	36	38	40	42	45	m	
FAVA	6000 5300 4500 3900 3400 3000 - 2750 2500 2300 2100 1950 1800 1650 1550 1450 1350 1250																				kg	
	3000 - 2750 2500 2300 2100 1950 1800 1650 1550 1450 1350 1250																				kg	
	3000 2950 2700 2450 2250 2100 1950 1850 1700 1600 1500 1400																				kg	
40 m	3,1	▶	13,9	16	18	20	22	24,6	25,9	26	28	30	32	34	36	38	40					m
FAVA	6000 5000 4400 3800 3400 3000 - 2800 2550 2350 2200 2000 1900 1750 1650																				kg	
	3000 - 2800 2550 2350 2200 2000 1900 1750 1650																				kg	
	3000 3000 2750 2550 2350 2200 2050 1900 1800																				kg	
33,8 m	3,1	▶	15,4	18	20	22	24	26	27,6	28,9	30	32	33,8									m
FAVA	6000 5000 4400 3900 3500 3200 3000 - 2700 2500 2350														kg							
	3000 - 2700 2500 2350														kg							
	3000 2850 2650 2500														kg							
31,7 m	3,1	▶	15,7	18	20	22	24	26	28,1	29,4	30	31,7									m	
FAVA	6000 5100 4500 4000 3600 3300 3000 - 2800 2600												kg									
	3000 - 2800 2600												kg									
	3000 2950 2750												kg									
45 m	3,1	▶	13,7	16	18	20	22	24,1	25,5	28	30	32									m	
FAVA	6000 5000 4300 3800 3400 3000 - 2550 2350 2150												kg									
	3000 - 2550 2350 2150												kg									
	3000 2700 2500 2300												kg									



FAVA	45 m	40 m	33,8 m	31,7 m
H+3	-	-	-	-
H+2	51	48,5	45,4	44,4
H+1	48	45,5	42,4	41,4
H+0	42	39,5	36,4	35,4
	-	-	-	-

45 m	3,1	▶	19,6	20,7	22	24	26	28	30	32	34	36	38	39	m	
FAVA	3000 - 2600 2350 2100 1900 1750 1600 1500 1400 1300 1250															kg
	3000 2800 2500 2300 2100 1900 1800 1650 1550 1450 1400															kg
40 m	3,1	▶	21,4	22,5	24	26	28	30	32	34,8						m
FAVA	3000 - 2600 2350 2150 2000 1850 1650											kg				
	3000 2800 2550 2300 2150 2000 1800											kg				
33,8 m	3,1	▶	24	25,1	26	28	29,3									m
FAVA	3000 - 2700 2500 2350							kg								
	3000 2900 2650 2500							kg								
31,7 m	3,1	▶	24,5	25,6	26	27,6									m	
FAVA	3000 - 2800 2600						kg									
	3000 2950 2750						kg									



45 m	3,1	▶	21,2	22,2	24	26	27,6						m
40 m	3000 - 2600 2350 2150							kg					
FAVA	3000 2750 2500 2300							kg					

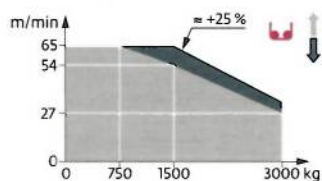
FAVA	45 m
	40 m
H+3	-
H+2	-
	44,4
H+1	41,4
	38,4
H+0	35,4
	-

Mécanismes / Triebwerke / Mechanisms / Mecanismos / Meccanismi
 Mecanismos / Механизмы

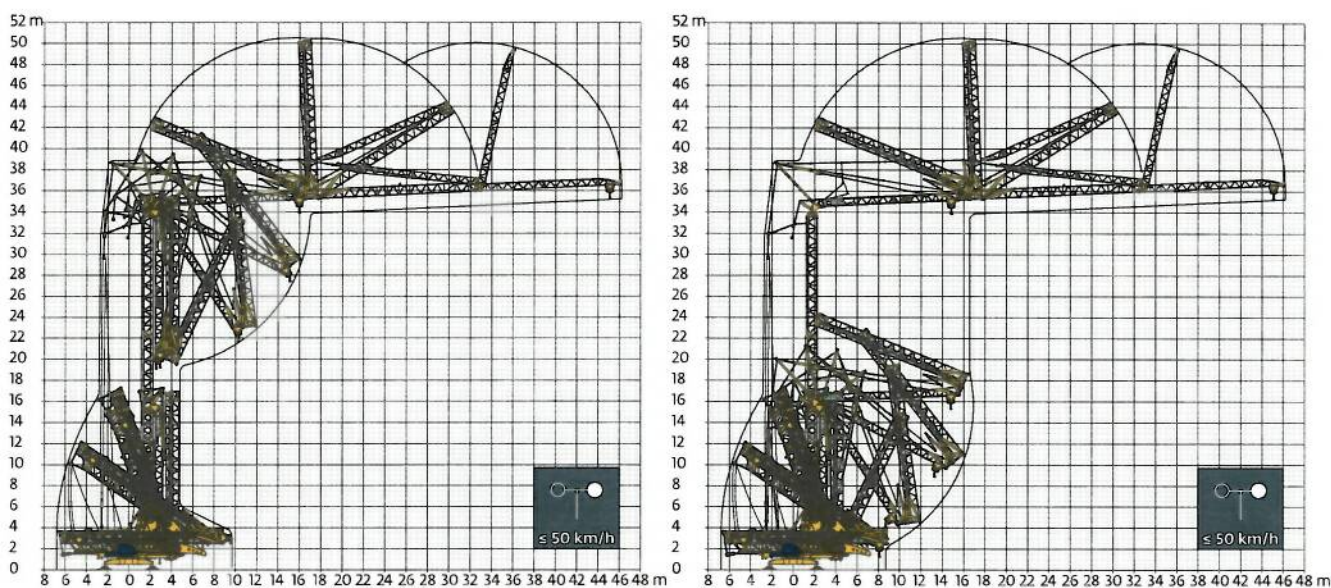
400 V - 50 Hz 480 V - 60 Hz												ch - PS hp	kW	
	20 LVF 15 Optima	m/min	3,2	16	27	54	65	1,6	8	13,5	27	32,5	20	15
		kg	3000	3000	3000	1500	750	6000	6000	6000	3000	1500		
	5 DVF 5	m/min	15 - 30 - 40 (2000 → 6000 kg) 15 - 30 - 55 (0 → 2000 kg)									5,5	4	
	RVF 151 Optima+	tr/min U/min rpm	0 → 0,8									5,5	4	
	TVF 324	m/min	25									2 x 4	2 x 3	

IEC 60204-32	kVA
400 V (+10% -10%) 50 Hz 480 V (+6% -10%) 60 Hz	31 kVA

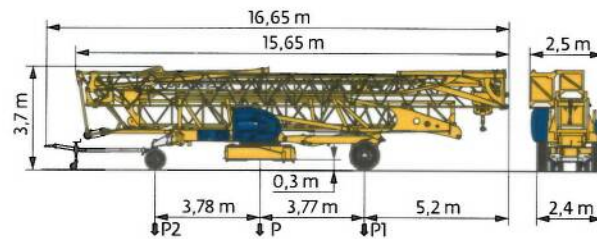
20 LVF 15 Optima



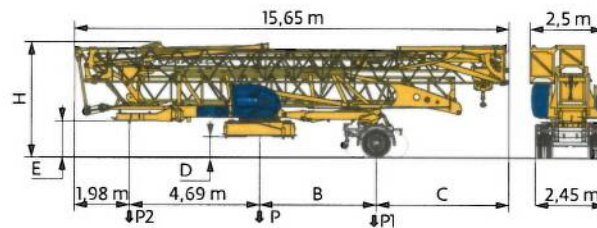
Montage / Montage / Erection / Montaje / Montaggio
 Montagem / Монтаж



Transport / Transport / Transport / Transporte / Trasporto
Transporte / Транспортировка



	km/h	P (kg)	P1 (kg)	P2 (kg)
DJ100/S120	10	19360	11491	7869
DJ105/S125	25	19650	11701	7949
..... /.....				



	km/h	B (m)	C (m)	D (m)	E (m)	H (m)	P (kg)	P1 (kg)	P2 (kg)
SL121/J135	25	4,2	4,78	0,7	1,3	4,1	20200	12800	7400
SL122/J215M	80	3,21	5,77	0,6	1,2	4	21050	15075	5975
..... /.....									

FR

DE

EN

ES

IT

PT

RU

	Rayon de giration	Schwenk radius	Rear slewing radius	Radio de giro	Raggio di rotazione	Raio de rotação	Задний габарит
	Nous consulter	Auf Anfrage	Consult us	Consultarnos	Consultateci	Consultar-nos	Проконсультируйтесь у нас
	Réactions en service	Reaktionskräfte in Betrieb	Reactions in service	Reacciones en servicio	Reazioni in servizio	Reacções em serviço	Реакция при работе
	Réactions hors service	Reaktionskräfte außer Betrieb	Reactions out of service	Reacciones fuera de servicio	Reazioni fuori servizio	Reacções fora de serviço	Реакция в покое
	Poids à vide, sans lest, sans trains de transport, avec flèche maxi et hauteur standard.	Gewicht ohne Last, ohne Ballast, ohne Transportachsen, mit max Auslager und Standardhöhe	Weight without load, without ballast, without transport axes, with max. job and standard height	Peso en vacío, sin lastre, sin trenes de transporte con flecha y altura estandar	Peso a vuoto, senza zavorra, senza assali di trasporto, con braccio max e altezza standard.	Peso em vazio, sem lastro, sem eixos de transporte com lança máxima e altura standard.	Вес без груза, без балласта, без осей для транспортировки, с максимальным вылетом стрелы и стандартной высотой
	Poids total du lest	Ballast-Gesamtgewicht	Total ballast weight	Peso total del lastre	Peso totale della zavorra	Peso total do lastro	Общий вес балласта
	Levage	Heben	Hoisting	Elevación	Sollevamento	Elevação	Подъем
	Distribution	Katzfahren	Trolleying	Distribución	Distribuzione	Distribuição	Перемещение по стреле
	Orientation	Schwenken	Slewing	Orientación	Rotazione	Rotação	Поворот
	Translaton	Kranfahren	Travelling	Traslación	Traslazione	Translação	Перемещение крана
	Puissance nominale	Nennleistung	Rated power	Potencia nominal	Potenza nominale	Potência nominal	Номинальная мощность

Document commercial non contractuel. Pour toute information technique se référer à la notice correspondante. Unverbindliches Vertriebsdokument. Für technische Informationen, siehe die entsprechenden Anweisungen. This commercial document is not legally binding. For any technical information, please refer to the corresponding instructions. Documento comercial no contractual. Para cualquier información técnica, ver la noticia correspondiente. Documento commerciale non vincolante, per tutte le informazioni tecniche fare riferimento al catalogo istruzioni. Documento comercial não contratual. Para qualquer informação técnica complementar consultar as respectivas instruções. Этот коммерческий документ не является юридически обязательным. Для получения технической информации, см соответствующие инструкции.

- Bau- und Industriekrane
- Verkauf-Vermietung-Service
- Hebebühnen
- Scheren-Bühnen
- Teleskop-Arbeitsbühnen
- Verkauf-Vermietung
- Transporte
- Spezialtransporte
- Greiferarbeiten
- Seilwindarbeiten
- LKW mit Ladekran

BISCHAG

Grienstrasse 17
4227 Büsserach
Telefon 061 781 55 11
Fax 061 781 55 12
www.bischag.ch



Manitowoc - Americas
Manitowoc, Wisconsin, USA
Tel: +1 920 684 6621
Fax: +1 920 683 6277

Shady Grove, Pennsylvania, USA
Tel: +1 717 597 8121
Fax: +1 717 597 4062

Manitowoc - Europe, Middle East & Africa
Ecully, France
Tel: +33 (0)4 72 18 20 20
Fax: +33 (0)4 72 18 20 00

Manitowoc - Asia & Pacific
Shanghai, China
Tel: +86 21 6457 0066
Fax: +86 21 6457 4955