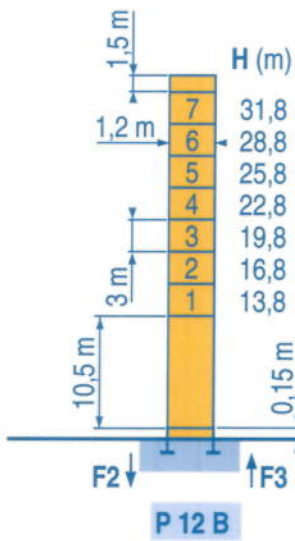




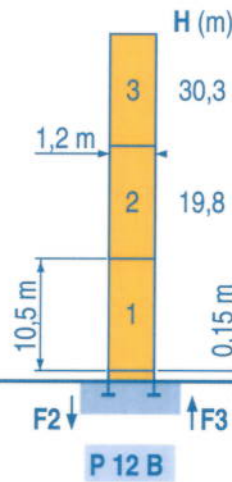


Ø 1,2 m

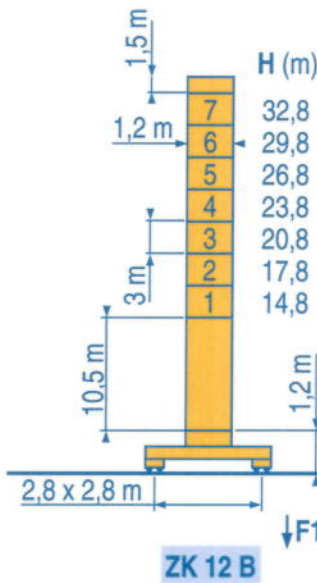
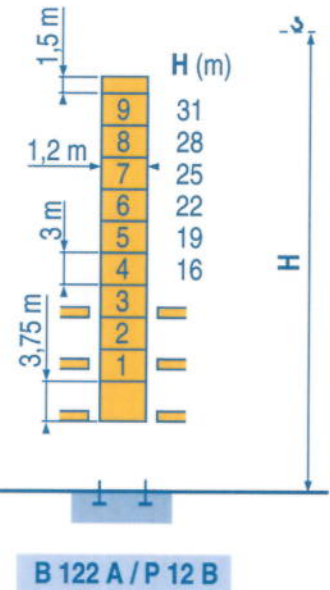
20 m → 35 m



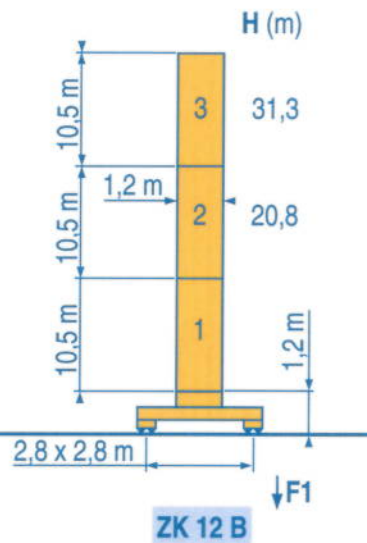
F2	● 41 t	■ 66 t
F3	● 30 t	■ 57 t
👤	14 t	



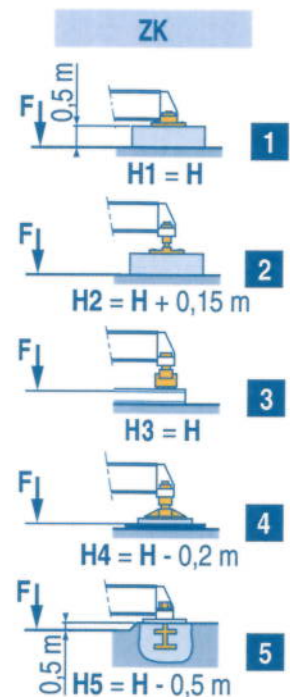
F2	● 37 t	■ 55 t
F3	● 28 t	■ 47 t
👤	11 t	



F1	● 37 t	■ 54 t
👤	17 t	



F1	● 34 t	■ 45 t
👤	14 t	



LUI 2



Voir télescopage sur dalles  
● Réactions en service  
■ Réactions hors service  
👤 A vide sans lest (ni train de transport) avec flèche et hauteur maximum.



Siehe Kletterkrane im Gebäude  
● Reaktionskräfte in Betrieb  
■ Reaktionskräfte außer Betrieb  
👤 Ohne Last, Ballast (und Transportachse), mit Maximalausleger und Maximalhöhe.



See climbing crane  
● Reactions in service  
■ Reactions out of service  
👤 Without load, ballast (or transport axes), with maximum jib and maximum height.



Vea grua trepadora  
● Reacciones en servicio  
■ Reacciones fuera de servicio  
👤 Sin carga, sin lastre, (ni tren de transporte), flecha y altura máxima.



Consultare gru in cavedio  
● Reazioni in servizio  
■ Reazioni fuori servizio  
👤 A vuoto, senza zavorra (ne assali di trasporto) con braccio massimo e altezza massima.



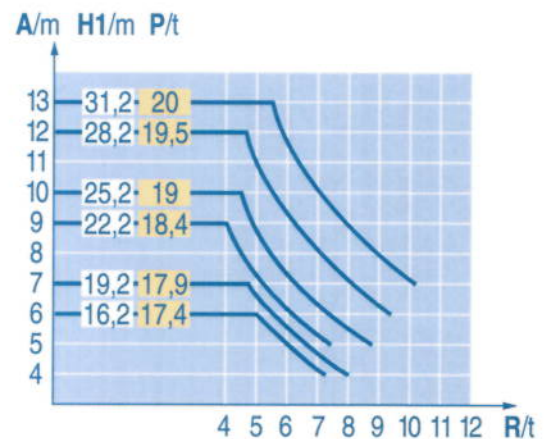
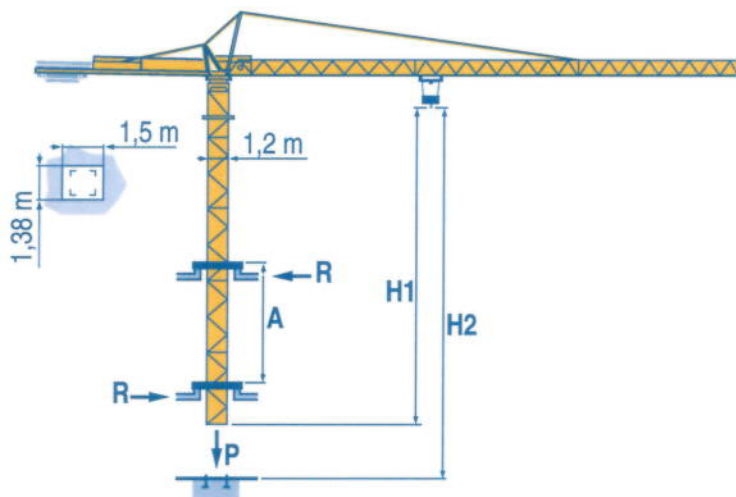
Ver telescopagem sobre lages  
● Reacções em serviço  
■ Reacções fora de serviço  
👤 Sem carga (nem trem de transporte)-sem lastro com lança e altura máximas.



35 m	1,75 ▶	16,4	19,8	20	22	25	27	30	32	35 m	
		2,5	-	1,98	1,77	1,52	1,38	1,22	1,12	1	t
			2	-	1,77	1,52	1,38	1,22	1,12	1	t
30 m	1,75 ▶	17,3	20	20,9	22	25	27	30 m			
		2,5	2,1	-	1,89	1,62	1,48	1,3			t
				2	1,89	1,62	1,48	1,3			t
25 m	1,75 ▶	17,5	20	21,2	22	25 m					
		2,5	2,15	-	1,92	1,65					t
				2	1,92	1,65					t
20 m	1,75 ▶	17,6	20 m								
		2,5	2,15								t
				2							t

LUI 1

B 122 A



LUI 1

A	Distance entre cadres	F	Abstand zwischen den Rahmen	D	Distance between collars	GB	Distancia entre marcos	E	Distanza fra i telai	I	Distância entre quadros	P
H1	Hauteur grue		Kranhöhe		Crane height		Altura grúa		Altezza gru		Altura da grua	
P	Poids de la grue (en service)		Krangewicht (in Betrieb)		Crane weight (in service)		Peso de la grúa (en servicio)		Peso della gru (in servizio)		Peso da grua (em serviço)	
R	Réaction horizontale		Horizontalkräfte		Horizontal reaction		Reaccion horizontal		Reazione orizzontale		Reacção horizontal	



					ch - PS hp	kW		
	9 RPC 10-3	m/min	6,6	20	40	8,2	6	115 m
		t	2	2	1			
	15 PC 10-2	m/min	8,3	25	50	15	11	178 m
		t	2	2	1			
	15 PC 13-5	m/min	7,1	21	42	15	11	130 m
		t	2,5	2,5	1,3			
	1 D2 V1	m/min	18 - 36			1,2	0,9	
	RCV 40	tr/min U/min rpm	0 → 0,8			6	4,5	
	TVD 324	m/min	26			2 x 4	2 x 2,9	

CEI 38	IEC 38	kVA	
400 V (+6% -10%) 50 Hz		9 PC : 15 kVA 15 PC : 20 kVA	84/534 - 87/405

LUI 3

	Levage	F	Heben	D	Hoisting	GB	Elevación	E	Sollevamento	I	Elevação	P
	Distribution		Katzfahren		Trolleying		Distribución		Distribuzione		Distribuição	
	Orientation		Schwenken		Slewing		Orientación		Rotazione		Rotação	
	Translation		Kranfahren		Travelling		Traslación		Traslazione		Translação	
	Conforme aux directives CEE 84/534 et 87/405 sur le niveau acoustique		Gemäss EWG-Richtlinien 84/534 und 87/405 für den Schall-Leistungspegel		In compliance with the EEC 84/534 and 87/405 Instructions on noise level		Conforme con las directivas CEE 84/534 y 87/405 sobre el nivel acústico		Conforme alle direttive CEE 84/534 e 87/405 sul livello acustico		Conforme as directivas CEE 84/534 e 87/405 sobre o nível acústico	

Document commercial non contractuel. Pour toute

Unverbindliches Vertriebsdokument. Für

This commercial document is not legally binding. For any technical information, please refer to the corresponding instructions.

Documento comercial no contractual. Para cualquier información técnica, ver la noticia correspondiente.

Documento commerciale non vincolante, per tutte le informazioni tecniche fare riferimento al catalogo istruzioni

Documento comercial não contractual. Para qualquer informação técnica complementar consultar as respectivas instruções

- Bau- und Industriekrane
- Verkauf-Vermietung-Service
- Hebebühnen
- Scheren-Bühnen
- Teleskop-Arbeitsbühnen
- Verkauf-Vermietung
- Transporte
- Spezialtransporte
- Greiferarbeiten
- Seilwindarbeiten
- LKW mit Ladekran

**BISCHAG**

Grienstrasse 17  
4227 Büsserach  
Telefon 061 781 55 11  
Fax 061 781 55 12  
www.bischag.ch



**POTAIN**

de Charbonnières, B.P. 173  
32 ECULLY Cedex  
33)04.72.18.20.20  
33)04.72.18.20.00  
www.potain.com  
mail : mkt@potain.fr



Manitowoc Crane Group

Deutschland  
POTAIN GmbH  
Italia  
POTAIN S.p.A.  
Portugal  
POTAIN Portugal  
Singapore  
MANITOWOC POTAIN PTE LTD

Tel : 06.1.05.70.40  
Tel : 0.331.49.33.11  
Tel : 22.968.08.89  
Tel : 227.15.50

Copyright.Reproduction interdite © POTAIN 2000

**CITY CRANE MC 48 B**  
Réf. 2000.36 LUI 5

Reserva de modificaciones

Modifiche riservate

Modificaciones reservadas

Subject to modification

Änderungen vorbehalten

Modifications réservées

Printed in France

Réalisation HeadLines