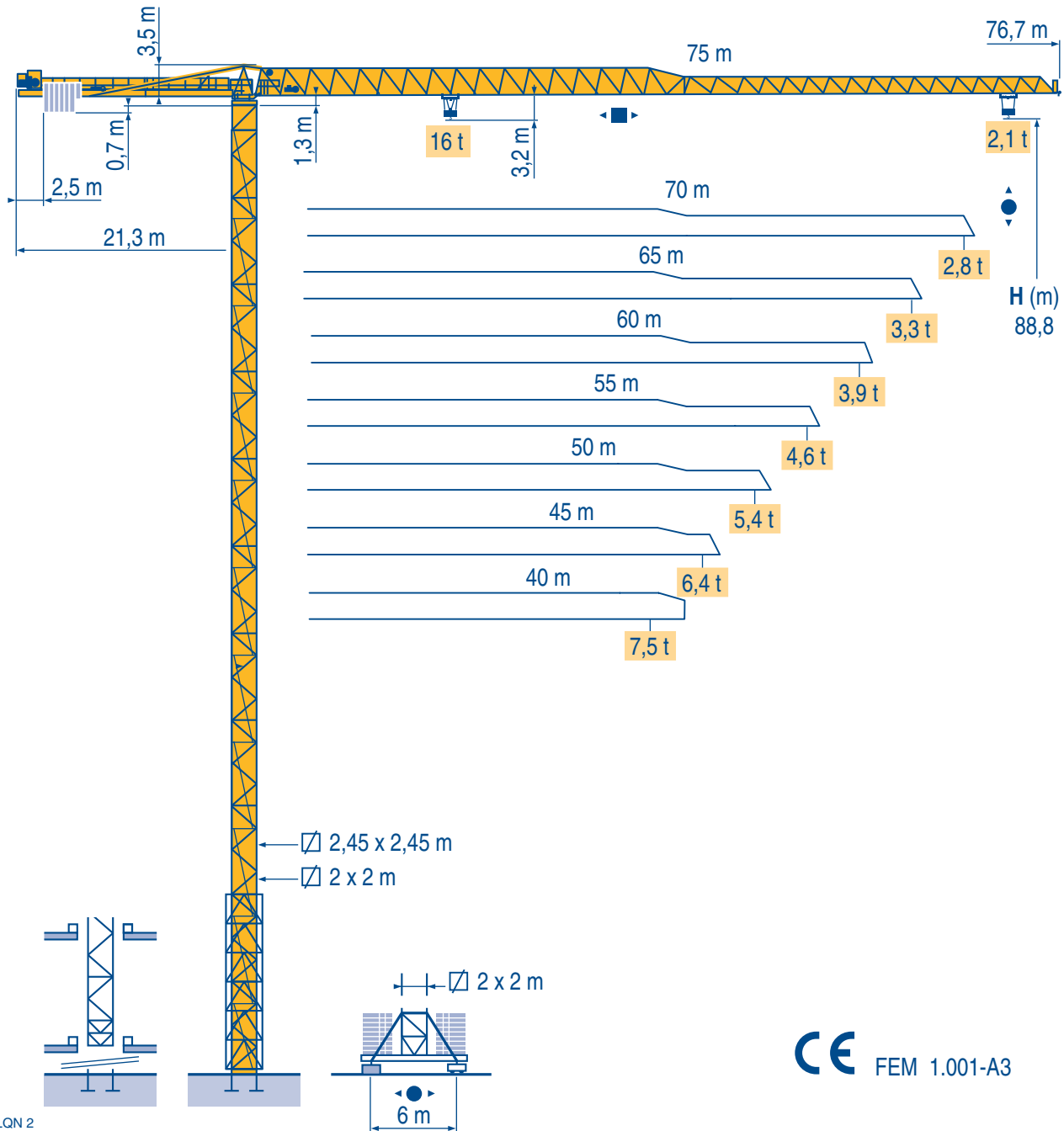


Topless MDT 302 L16



Igo
HD
HDM



HDT



GTMR



CITY CRANE



TOPKIT MD
MAXI MD



MAXI TOPKIT



Topless MDT



MR



CE FEM 1.001-A3

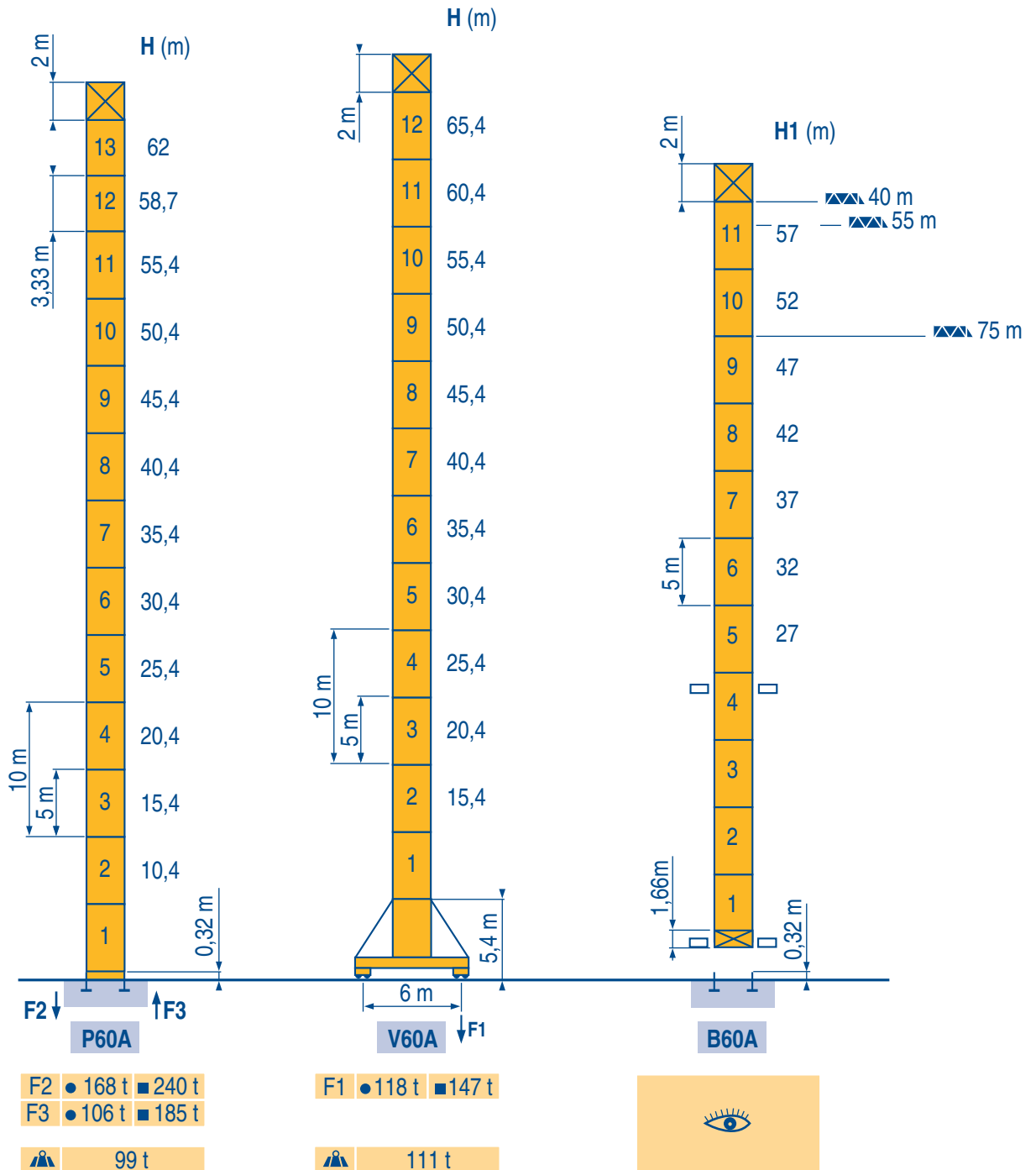


POTAIN 



2 m
MDT 302 L16

40 m → 75 m



LQN 1



Voir télescopage sur dalles
● Réactions en service
■ Réactions hors service
A vide sans lest (ni train de transport) avec flèche et hauteur maximum.



Siehe Kletterkrane im Gebäude
● Reaktionskräfte in Betrieb
■ Reaktionskräfte außer Betrieb
Ohne Last, Ballast (und Transportachse), mit Maximalausleger und Maximalhöhe.



See climbing crane
● Reactions in service
■ Reactions out of service
Without load, ballast (or transport axes), with maximum jib and maximum height.



Veá grua trepadora
● Reacciones en servicio
■ Reacciones fuera de servicio
Sin carga, sin lastre, (ni tren de transporte), flecha y altura máxima.



Consultare gru in cavedio
● Reazioni in servizio
■ Reazioni fuori servizio
A vuoto, senza zavorra (ne assali di trasporto) con braccio massimo e altezza massima.



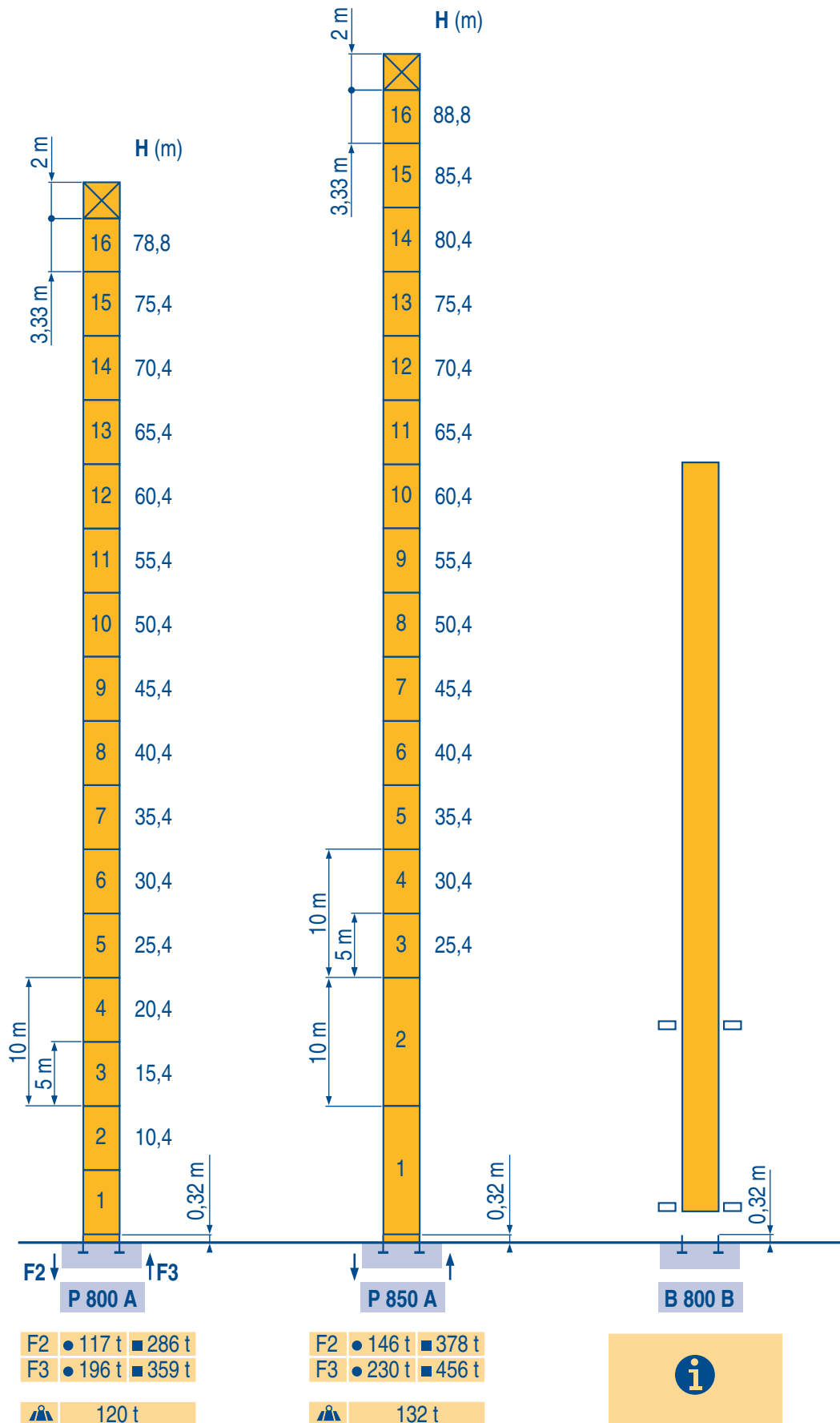
Ver telescopagem sobre lages
● Reações em serviço
■ Reações fora de serviço
Sem carga (nem trem de transporte)-sem lastro com lança e altura máximas.





2,45 m
MDT 302 L16

40 m → 75 m



LQN 1

Courbes de charges
Lastkurven

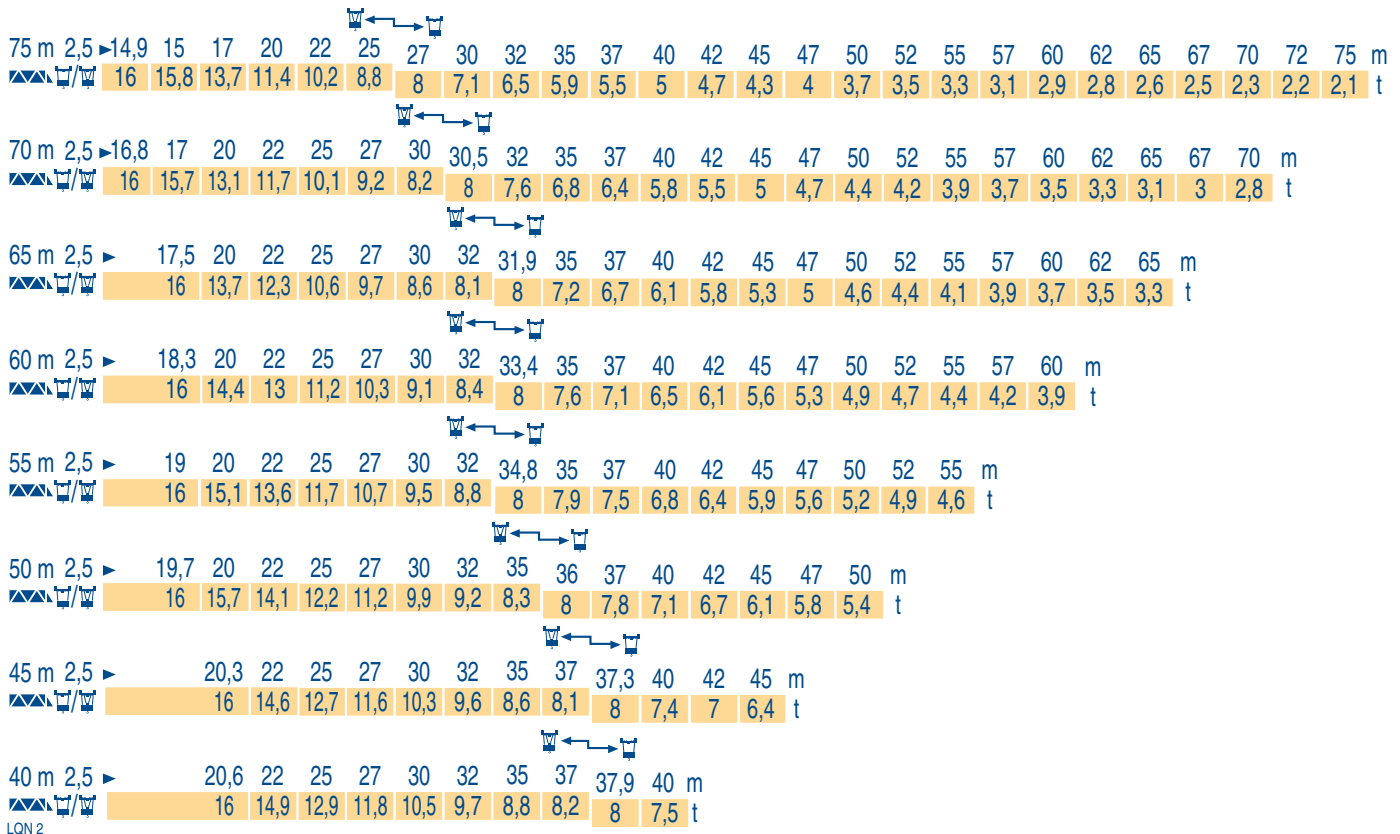
F
D

Load diagrams
Curvas de cargas

GB
E

Curve di carico
Curva de cargas

I
P



Télescopage sur dalles
Kletterkrane im Gebäude

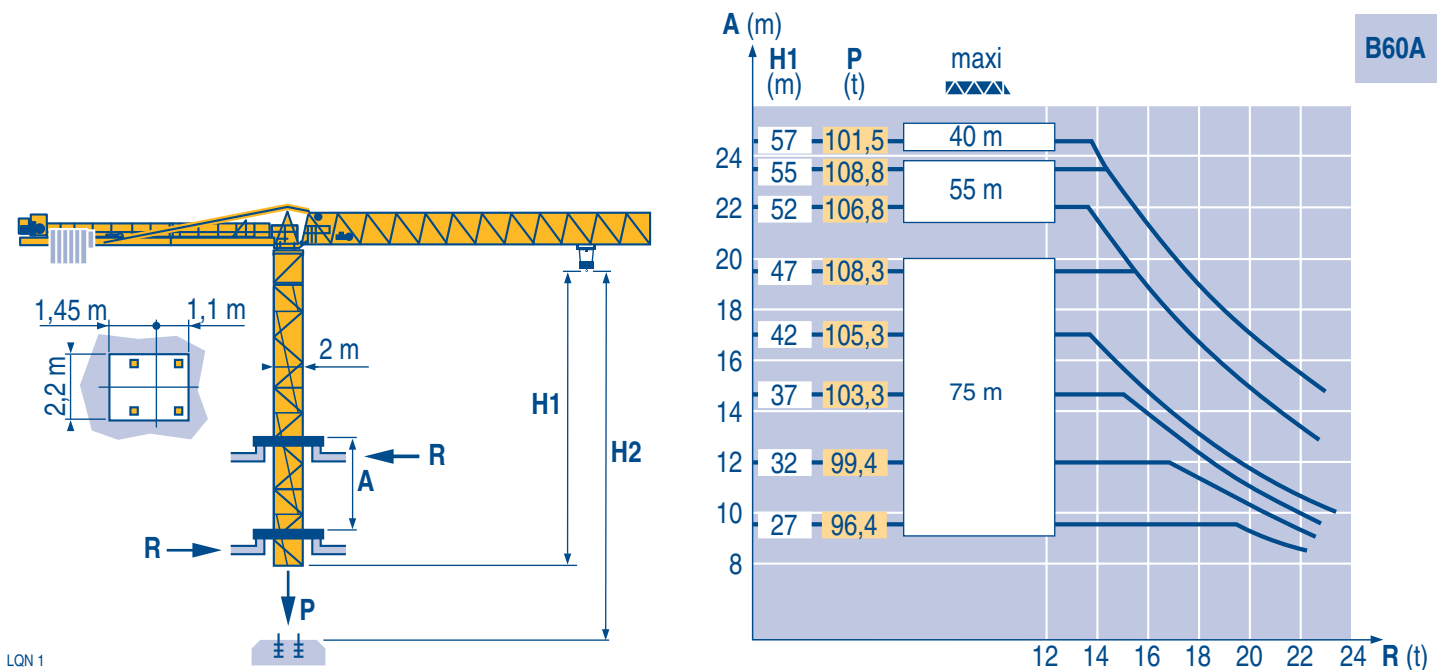
F
D

Climbing crane
Telescopage gruas trepadoras

GB
E

Gru in cavedio
Telescopagem sobre lages

I
P



A	F	D	GB	E	I	P
Distance entre cadres	Abstand zwischen den Rahmen	Distance between collars	Distancia entra marcos	Distanza fra i telai	Distância entre quadros	
H1	Hauteur grue	Kranhöhe	Crane height	Altura grúa	Altezza gru	Altura da grua
P	Poids de la grue (en service)	Krangewicht (in Betrieb)	Crane weight (in service)	Peso de la grúa (en servicio)	Peso della gru (in servizio)	Peso da grua (em serviço)
R	Réaction horizontale	Horizontalkräfte	Horizontal reaction	Reaccion horizontal	Reazione orizzontale	Reacção horizontal

										ch - PS hp	kW		
	45 S 4,0 510	m/min	2,6/26	4,2/42	6,8/68	11/108	1,3/13	2,1/21	3,4/34	5,4/54	62	45	510 m >510
		t	8	4,6	2,7	1,6	16	9,2	5,4	3,2			
	66 S 4,0 880	m/min	3,1/31	5/50,6	8/80,8	13/128	1,6/15,9	2,5/25,3	4/40,4	6,4/64	90	66	880 m >880
		t	8	5,5	3,45	2	16	11	6,9	4			
	D3-7,5	m/min	8 - 40 - 80							10,3	7,5		
	R-13,2	tr/min U/min rpm	0 → 0,63							3 x 6	3 x 4,4		
 R 13 m	RT 544 A1 2V	m/min	13,5 - 27							4 x 7	4 x 5,2		
CEI 38	IEC 38	kVA											
400 V (+6% -10%) 50 Hz		45 S : 80 kVA 66 S : 108 kVA				84/534 - 87/405							

LQN 2

	Levage	F	Heben	D	Hoisting	GB	Elevación	E	Sollevamento	I	Elevação	P
	Distribution		Katzfahren		Trolleying		Distribución		Distribuzione		Distribuição	
	Orientation		Schwenken		Slewing		Orientación		Rotazione		Rotação	
	Translation		Kranfahren		Travelling		Traslación		Traslazione		Translação	
	Conforme aux directives CEE 84/534 et 87/405 sur le niveau acoustique		Gemäss EWG-Richtlinien 84/534 und 87/405 für den Schall-Leistungspegel		In compliance with the EEC 84/534 and 87/405 Instructions on noise level		Conforme con las directivas CEE 84/534 y 87/405 sobre el nivel acustico		Conforme alle direttive CEE 84/534 e 87/405 sul livello acustico		Conforme as directivas CEE 84/534 e 87/405 sobre o nível acústico	
	Nous consulter		Auf Anfrage		Consult us		Consultarnos		Consultateci		Consultar-nos	



Document commercial non contractuel. Pour toute information technique se référer à la notice correspondante

Unverbindliches Vertriebsdokument. Für technische Informationen, siehe die entsprechenden Anweisungen.

This commercial document is not legally binding. For any technical information, please refer to the corresponding instructions.

Documento comercial no contractuel. Para cualquier información técnica, ver la noticia correspondiente.

Documento commerciale non vincolante, per tutte le informazioni tecniche fare riferimento al catalogo istruzioni

Documento comercial não contratual. Para qualquer informação técnica complementar consultar as respectivas instruções

POTAIN 

18.Rue de Charbonnières, B.P. 173
F-69132 ECULLY Cedex
Tél. (33)04.72.18.20.20
Fax (33)04.72.18.20.00
<http://www.potain.com>
E-mail : mkt@potain.fr



Manitowoc Crane Group

Deutschland

POTAIN GmbH

Tel : 06.1.05.70.40

Italia

POTAIN S.p.A.

Tel : 0.331.49.33.11

Portugal

POTAIN Portugal

Tel : 22.968.08.89

Singapore

MANITOWOC POTAIN PTE LTD Tel : 227.15.50

Copyright.Reproduction interdite © POTAIN 1999

Topless MDT 302 L16

Réf. 1999.02. LQN.6