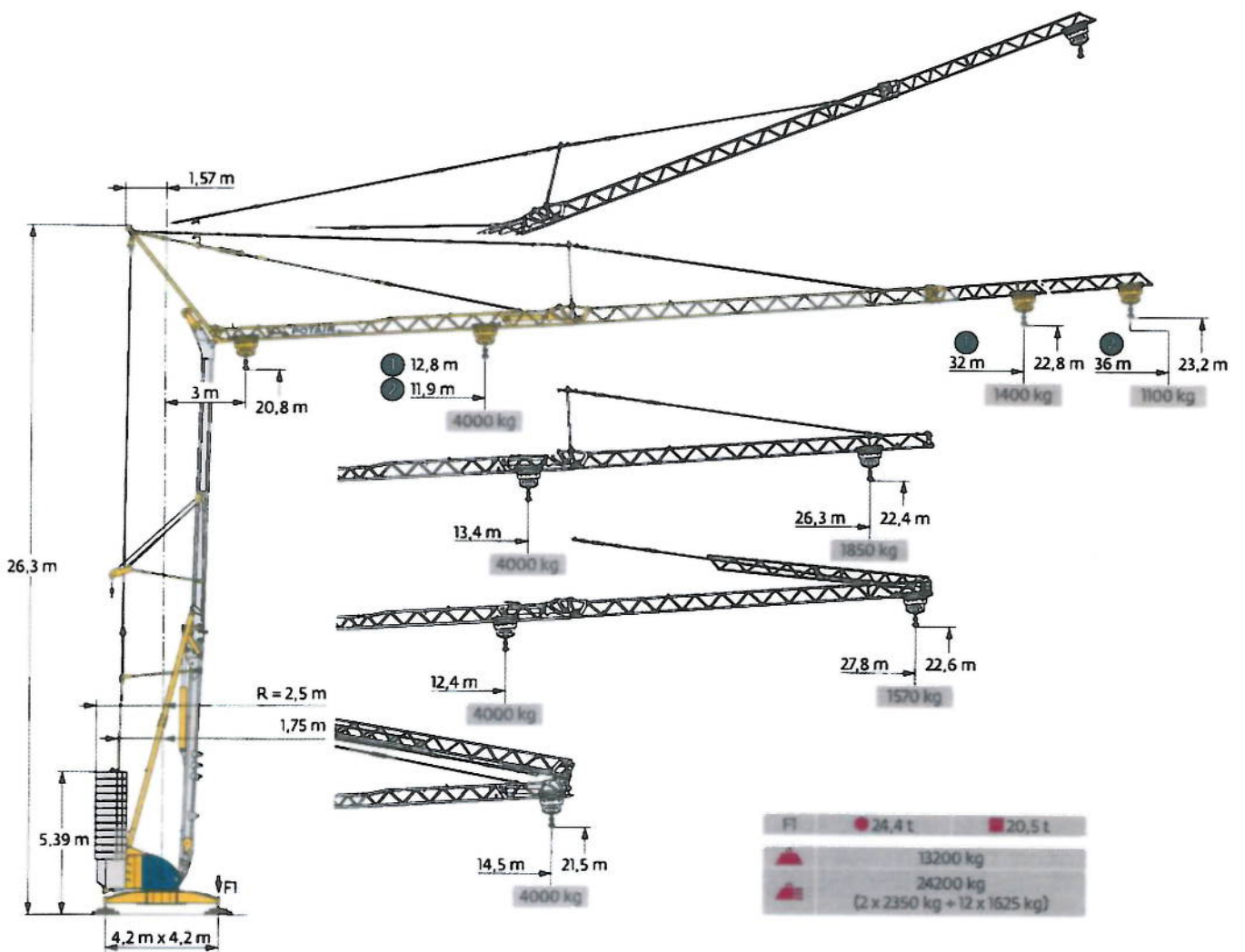
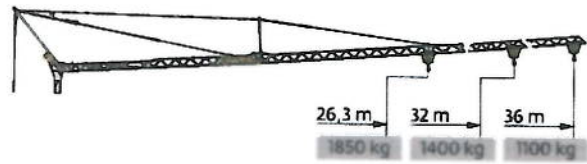
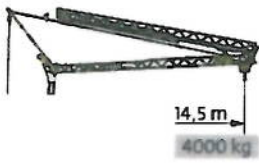


Potain Igo 42



Courbes de charges / Lastkurven / Load curves / Curvas de cargas / Curve di carico
 Curvas de carga / Кривые нагрузок

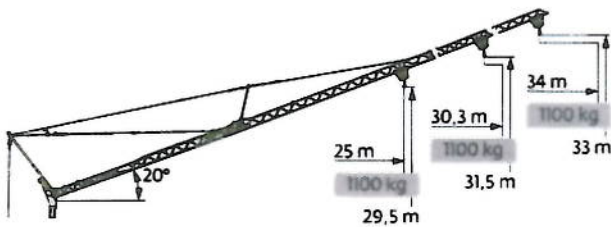


36 m	3	▶	14,5	m
	4000 kg			
	2000 kg			
	2000 kg			
32 m	3	▶	14,5	m
	4000 kg			
	2000 kg			
	2000 kg			
26,3	3	▶	14,5	m
	4000 kg			
	2000 kg			
	2000 kg			

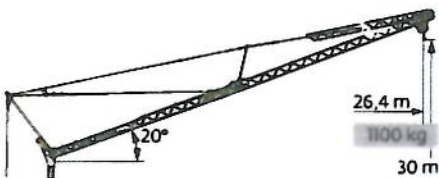
3	▶	11,9	12	14	16	18	20	20,8	21,8	22	24	26	28	30	32	34	36	m
	4000 3950 3255 2750 2385 2095 2000 1885 1860 1670 1515 1380 1265 1165 1080 1000																	
	2000 1885 1860 1670 1515 1380 1265 1165 1080 1000																	
	2000 1975 1780 1620 1485 1370 1265 1180 1100																	
3	▶		12,8	14	16	18	20	22	22,6	23,6	24	26	28	30	32			m
	4000 3595 3050 2640 2320 2065 2000 1895 1855 1685 1535 1410 1300																	
	2000 1895 1855 1685 1535 1410 1300																	
	2000 1965 1790 1640 1510 1400																	
3	▶		13,4	14	16	18	20	22	23,6	24	24,6	26,3						m
	4000 3780 3210 2780 2445 2180 2000 1930 1900 1750																	
	2000 1930 1900 1750																	
	2000 1850																	



36 m	3	▶	12,4	14	16	18	20	21,7	22	22,6	24	26	27,8	m
	4000 3425 2900 2510 2210 1995 1965 1900 1765 1600 1470													
	2000 1965 1900 1765 1600 1470													
	2000 1865 1700 1570													



36 m	3	▶											34	m
	1000													
	1100													
32 m	3	▶											30,3	m
	1000													
	1100													
26,3 m	3	▶								25				m
	1000													
	1100													



36 m	3	▶											26,4	m
	1000													
	1100													



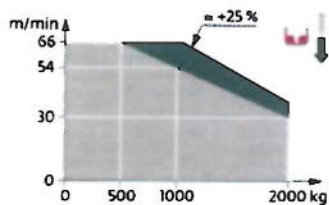
36 m	3	▶											13,8	m
	1000													
	1100													

Mécanismes / Triebwerke / Mechanisms / Mecanismos / Meccanismi
 Mecanismos / Механизмы

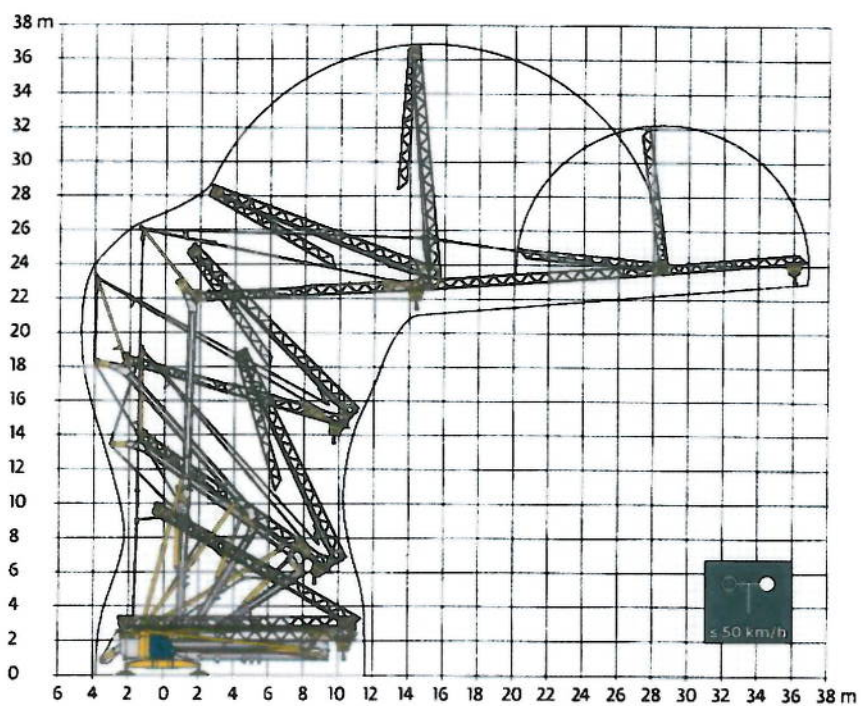
400 V - 50 Hz 480 V - 60 Hz			L↑					UU↑					ch-PS hp	kW
▲	15 LVF 10 Optima	m/min	3,6	18	30	54	66	1,8	9	15	27	33	15	11
		kg	2000	2000	2000	1000	500	4000	4000	4000	2000	1000		
◀▶	3 DVF 5	m/min	15 - 30 - 45 (0 → 1000 kg) 15 - 30 - 41 (1000 → 4000 kg)									3	2,2	
●	RVF 41 Optima+	tr/min U/min rpm	0 → 0,8									2	3	

IEC 60204-32	kVA
400 V (+10% -10%) 50 Hz 480 V (+6% -10%) 60 Hz	22 kVA

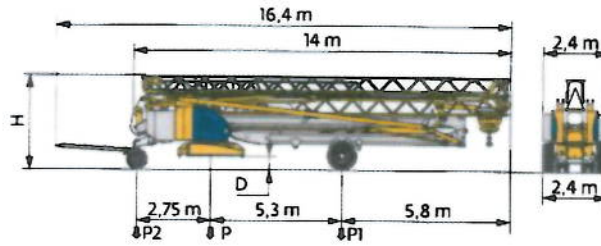
15 LVF 10 Optima



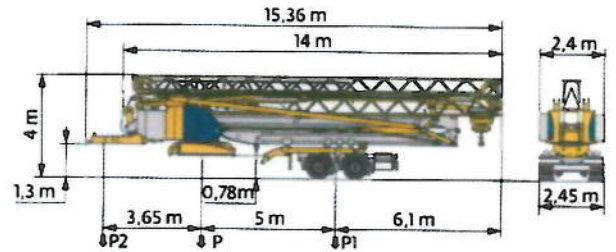
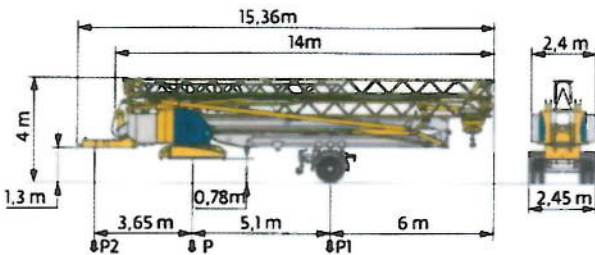
Montage / Montage / Erection / Montaje / Montaggio
 Montagem / Монтаж



Transport / Transport / Transport / Transporte / Trasporto
Transporte / Транспортировка



	km/h	D (m)	H (m)	P (kg)	P1 (kg)	P2 (kg)
DJ100/S120	10	0,36/0,21	3,52/3,37	19280	10980	8300
DJ105/S125	25	0,36/0,21	3,52/3,37	19570	10650	8920



	km/h	P (kg)	P1 (kg)	P2 (kg)
SL121/J135	25	20190	12730	7460

	km/h	P (kg)	P1 (kg)	P2 (kg)
SL122/J215M	80	21260	13910	7350

FR

- R Rayon de giration
- Nous consulter
- Reactions en service
- Reactions hors service
- ▲ Poids à vide, sans lest sans trains de transport, avec flèche max et hauteur standard
- ▲ Poids total du lest
- ⬆️ Levage
- ⬆️ Distribution
- ⬆️ Orientation
- ⬆️ Puissance nominale

DE

- Schwenk radius
- Auf Anfrage
- Reaktionskräfte in Betrieb
- Reaktionskräfte außer Betrieb
- Gewicht ohne Last, ohne Ballast, ohne Transportachsen mit max Auslager- und Standardhöhe
- Ballast-Gesamtgewicht
- Heben
- Katzfahren
- Schwenken
- Nennleistung

EN

- Rear slewing radius
- Consult us
- Reactions in service
- Reactions out of service
- Weight without load, without ballast, without transport axes, with max. jib and standard height
- Total ballast weight
- Hoisting
- Trolleying
- Slewing
- Rated power

ES

- Radio de giro
- Consultarnos
- Reacciones en servicio
- Reacciones fuera de servicio
- Peso en vacío, sin lastre, sin trenes de transporte con flecha y altura estándar
- Peso total del lastre
- Elevación
- Distribución
- Orientación
- Potencia nominal

IT

- Raggio di rotazione
- Consultateci
- Reazioni in servizio
- Reazioni fuori servizio
- Peso a vuoto, senza zavorra, senza assali di trasporto, con braccio max e altezza standard
- Peso totale della zavorra
- Sollevamento
- Distribuzione
- Rotazione
- Potenza nominale

PT

- Raio de rotação
- Consultar-nos
- Reacções em serviço
- Reacções fora de serviço
- Peso em vazio, sem lastro, sem eixos de transporte com lança máxima e altura standard.
- Peso total do lastro
- Elevação
- Distribuição
- Rotação
- Potência nominal

RU

- Задний габарит
- Проконсультируйтесь у нас
- Реакция при работе
- Реакция в покое
- Вес без груза, без балласта, без осей для транспортировки, с максимальным вылетом стрелы и стандартной высотой
- Общий вес балласта
- Подъем
- Перемещение по стреле
- Поворот
- Номинальная мощность



Document commercial non contractuel. Pour toute information technique se référer à la notice correspondante

Unverbindliches Vertriebsdokument. Für technische Informationen, siehe die entsprechenden Anweisungen

This commercial document is not legally binding. For any technical information, please refer to the corresponding instructions

Documento comercial no contractual. Para cualquier información técnica, ver la noticia correspondiente

Documento commerciale non vincolante. Per tutte le informazioni tecniche fare riferimento al catalogo istruzioni

Documento comercial não contractual. Para qualquer informação técnica complementar consultar as respectivas instruções

Этот коммерческий документ не является юридически обязательным. Для получения технической информации, см соответствующие инструкции

- Bau- und Industriekräne
- Verkauf-Vermietung-Service
- Hebebühnen
- Scheren-Bühnen
- Teleskop-Arbeitsbühnen
- Verkauf-Vermietung
- Transporte
- Spezialtransporte
- Greiferarbeiten
- Seilwindarbeiten
- LKW mit Ladekran

BISCHAG

Grienstrasse 17
4227 Büsserach
Telefon 061 781 55 11
Fax 061 781 55 12
www.bischag.ch



Manitowoc - Americas
Manitowoc, Wisconsin, USA
+1 920 684 6621
+1 920 683 6277

Manitowoc - Pennsylvania, USA
+1 717 597 8121
+1 717 597 4062

Manitowoc - Europe, Middle East & Africa
Ecully, France
Tel: +33 (0)4 72 18 20 20
Fax: +33 (0)4 72 18 20 00

Manitowoc - Asia & Pacific
Shanghai, China
Tel: +86 21 6457 0066
Fax: +86 21 6457 4955