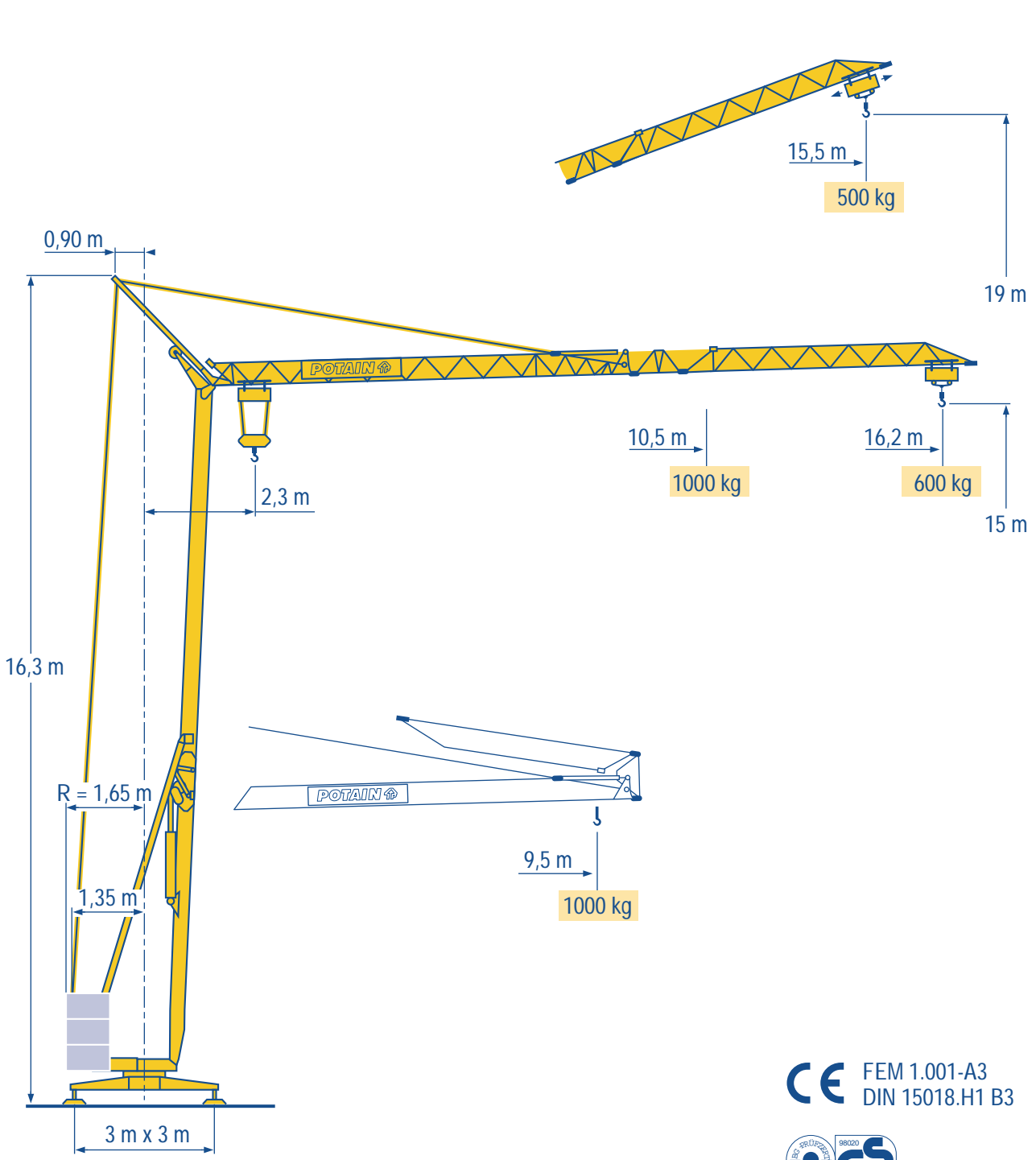


# HD 10 A



- HD HDM
- HDT
- GTMR
- CITY CRANE
- TOPKIT MD  
MAXI MD
- MAXI TOPKIT
- Topless MDT
- MR

CE FEM 1.001-A3  
DIN 15018.H1 B3



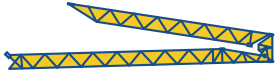
Courbes de charges  
Lastkurven



Load diagrams  
Curvas de cargas



Curve di carico  
负荷曲线



16,2 m 2,3 9,5  
1000



10,5 11 12 13 14 15 16 16,2 m  
1000 950 855 780 715 660 610 600 kg

LMK 1

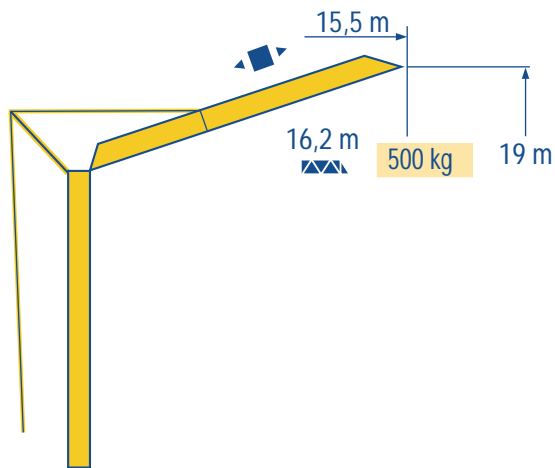
Flèche relevée  
Ausleger in Steilstellung



Luffing jib  
Flecha izada



Braccio impennato  
起升吊臂



LMK 1



Chariot distributeur



Traversing trolley



Carrellino distributore



Verfahrbare laufkatze

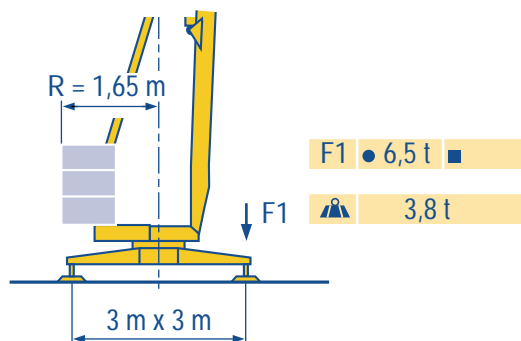


Carro distribuidor



变幅小车





LMK 1

|  |     |  |      |  |     |
|--|-----|--|------|--|-----|
| <ul style="list-style-type: none"> <li>● Réactions en service</li> <li>■ Réactions hors service</li> <li>👤 A vide sans lest (ni train de transport) avec flèche et hauteur maximum</li> </ul>                    | (F) | <ul style="list-style-type: none"> <li>● Reactions in service</li> <li>■ Reactions out of service</li> <li>👤 Without load, ballast (or transport axles), with maximum jib and maximum height.</li> </ul> | (GB) | <ul style="list-style-type: none"> <li>● Reazioni in servizio</li> <li>■ Reazioni fuori servizio</li> <li>👤 A vuoto, senza zavorra (ne assali di trasporto) con braccio massimo e altezza massima</li> </ul> | (I) |
| <ul style="list-style-type: none"> <li>● Reaktionskräfte in Betrieb</li> <li>■ Reaktionskräfte außer Betrieb</li> <li>👤 Ohne Last, Ballast (und Transportachse), mit Maximalausleger und Maximalhöhe.</li> </ul> | (D) | <ul style="list-style-type: none"> <li>● Reacciones en servicio</li> <li>■ Reacciones fuera de servicio</li> <li>👤 Sin carga, sin lastre, (ni tren de transporte), flecha y altura máxima.</li> </ul>    | (E)  | <ul style="list-style-type: none"> <li>● 工作状态下的反应</li> <li>■ 非工作状态下的反应</li> <li>👤 空载无压重也无运输车有吊臂和最大高度</li> </ul>  | (C) |

Mécanismes  
Antriebe

Mechanisms  
Mecanismos

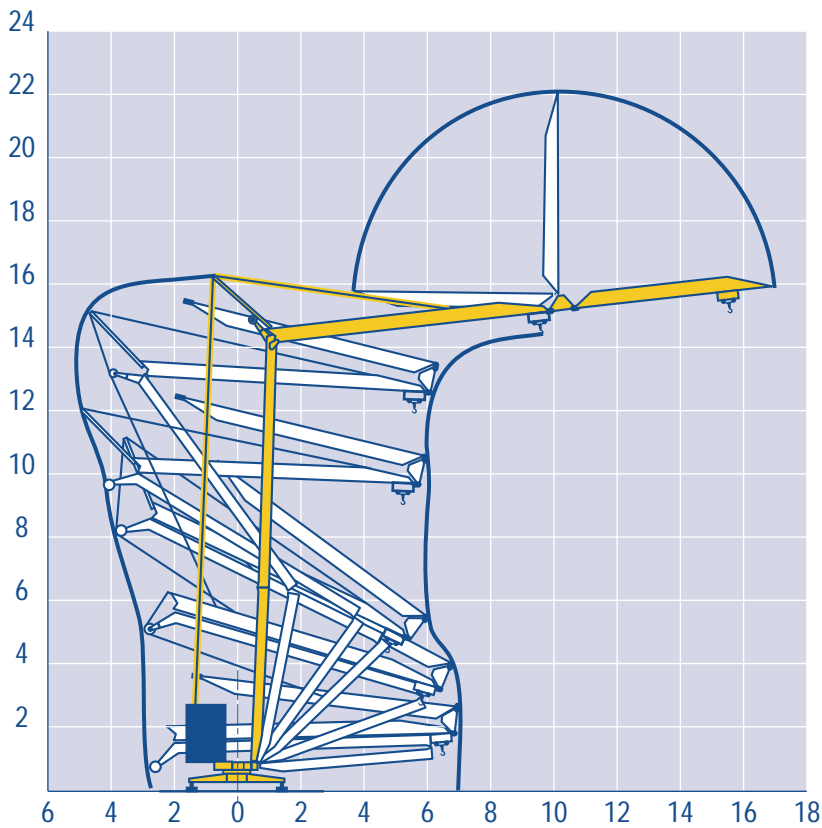
Meccanismi  
机构

|                          |   |                   |                     |             |           | ch - PS<br>hp | kW  |     |
|--------------------------|---|-------------------|---------------------|-------------|-----------|---------------|-----|-----|
| ▲▼                       | 5 L2 V5<br>Triphase                     | 400 V             | m/min               | —           | ↓ 17      | ↓ 34          | 5   | 3,7 |
|                          |   |                   | kg                  | —           | 1000      | 600           |     |     |
|                          | 6 LVF 5<br>Tri-Monophasé<br>230 V/400 V | 230 V $\text{--}$ | m/min               | ↑ 3,5 ↓ 3,5 | ↑ 12 ↓ 20 | ↑ 20 ↓ 34     | 4   | 3   |
|                          |   |                   | kg                  | 1000 1000   | 1000 1000 | 600 600       |     |     |
| 3 L2 V5<br>Mono-Triphase | 400 V                                   | m/min             | ↓ 3,5               | ↓ 20        | ↓ 34      | 6             | 4,4 |     |
|                          |   | kg                | 1000                | 1000        | 600       |               |     |     |
| 1 DC1 V2                 | —                                       | m/min             | —                   | ↓ 9         | ↓ 18      | 3             | 2,2 |     |
|                          |   | kg                | —                   | 1000        | 600       |               |     |     |
| ◀▶                       | RVF 20                                  | —                 | m/min               | 20          |           |               | 1,5 | 1,1 |
| 🌀                        | RVF 20                                  | —                 | tr/min U/min<br>rpm | 0,3 → 1     |           |               | 1   | 0,6 |

|                                   |        |                 |                 |
|-----------------------------------|--------|-----------------|-----------------|
| CEI 38                            | IEC 38 | <b>kVA</b>      |                 |
| 230 V(+6% -10%) 50 Hz $\text{--}$ |        | 230 V : 4,6 kVA | 84/534 - 87/405 |
| 400 V(+6% -10%) 50 Hz             |        | 400 V : 7,5 kVA |                 |

LMK 3

|  |     |   |      |  |     |
|--|-----|---|------|--|-----|
| <ul style="list-style-type: none"> <li>▲▼ Levage</li> <li>◀▶ Distribution</li> <li>🌀 Orientation</li> <li><math>\text{--}</math> 50 Hz Monophasé</li> <li>👤 Conforme aux directives CEE 84/534 et 87/405 sur le niveau acoustique</li> </ul> | (F) | <ul style="list-style-type: none"> <li>Hoisting</li> <li>Trolleying</li> <li>Slewing</li> <li>50 Hz Single phase</li> <li>In compliance with the EEC 84/534 and 87/405 Instructions on noise level</li> </ul>     | (GB) | <ul style="list-style-type: none"> <li>Sollevamento</li> <li>Distribuzione</li> <li>Rotazione</li> <li>50 Hz Monofase</li> <li>Conforme alle direttive CEE 84/534 e 87/405 sul livello acustico</li> </ul> | (I) |
| <ul style="list-style-type: none"> <li>▲▼ Heben</li> <li>◀▶ Katzfahren</li> <li>🌀 Schwenken</li> <li><math>\text{--}</math> 50 Hz Einphasige</li> <li>👤 Gemäss EWG-Richtlinien 84/534 und 87/405 für den Schall-Leistungspegel</li> </ul>    | (D) | <ul style="list-style-type: none"> <li>Elevación</li> <li>Distribución</li> <li>Orientación</li> <li>50 Hz Monofasica</li> <li>Conforme con las directivas CEE 84/534 y 87/405 sobre el nivel acustico</li> </ul> | (E)  | <ul style="list-style-type: none"> <li>起升</li> <li>变幅</li> <li>回转</li> <li>电源 : 50 Hz 单相</li> <li>符合 CEE 84/534 - CEE 87/405 声响度规定</li> </ul>  | (C) |



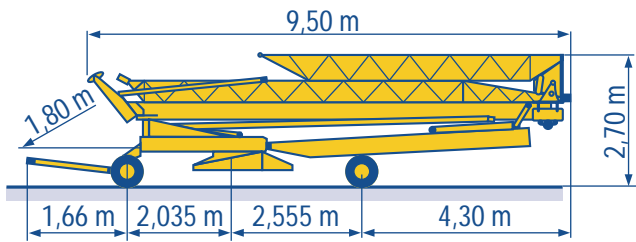
LMK 1

Transport  
Transport

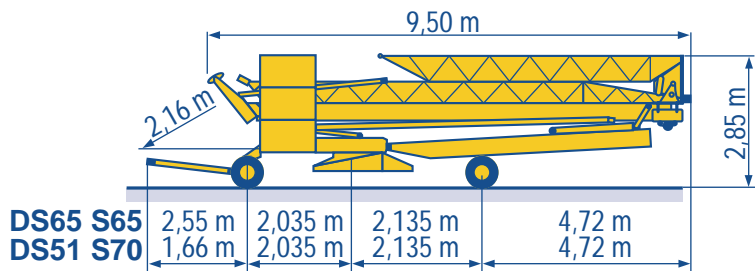
F  
D  
Transport  
Transporte

GB  
E  
Trasporto  
运输

I  
C  
I  
C



DS30/S30 ○



DS65/S65

DS51/S70 ○

LMK 1

○ Chantier

F Site

GB Cantiere

I

○ Baustelle

D Obra

E 工地运输

C

**BISCHAG**

Bau- und Industriekrane  
Verkauf-Vermietung-Service  
Hebebühnen  
Scheren-Bühnen  
Teleskop-Arbeitsbühnen  
Verkauf-Vermietung  
Transporte  
Spezialtransporte  
Greiferarbeiten  
Seilwindarbeiten  
LKW mit Ladekran

Grienstrasse 17  
4227 Büsserach  
Telefon 061 781 55 11  
Fax 061 781 55 12  
www.bischag.ch



**POTAIN** ↑  
GROUPE LEGRIS INDUSTRIES

18.Rue de Charbonnières, B.P. 173  
F-69132 ECULLY Cedex  
Tél. (33)04.72.18.20.20  
Fax (33)04.72.18.20.00  
http://www.potain.com  
E-mail : mkt@potain.fr

**HD 10 A**

Copyright.Reproduction interdite © POTAIN 1997

**Deutschland**  
POTAIN GmbH Tel : 06.105.704.0  
**Italia**  
POTAIN S.p.A. Tel : 0.331.49.33.11  
**Singapore**  
POTAIN PTE LTD Tel : (00.65) 227.1550