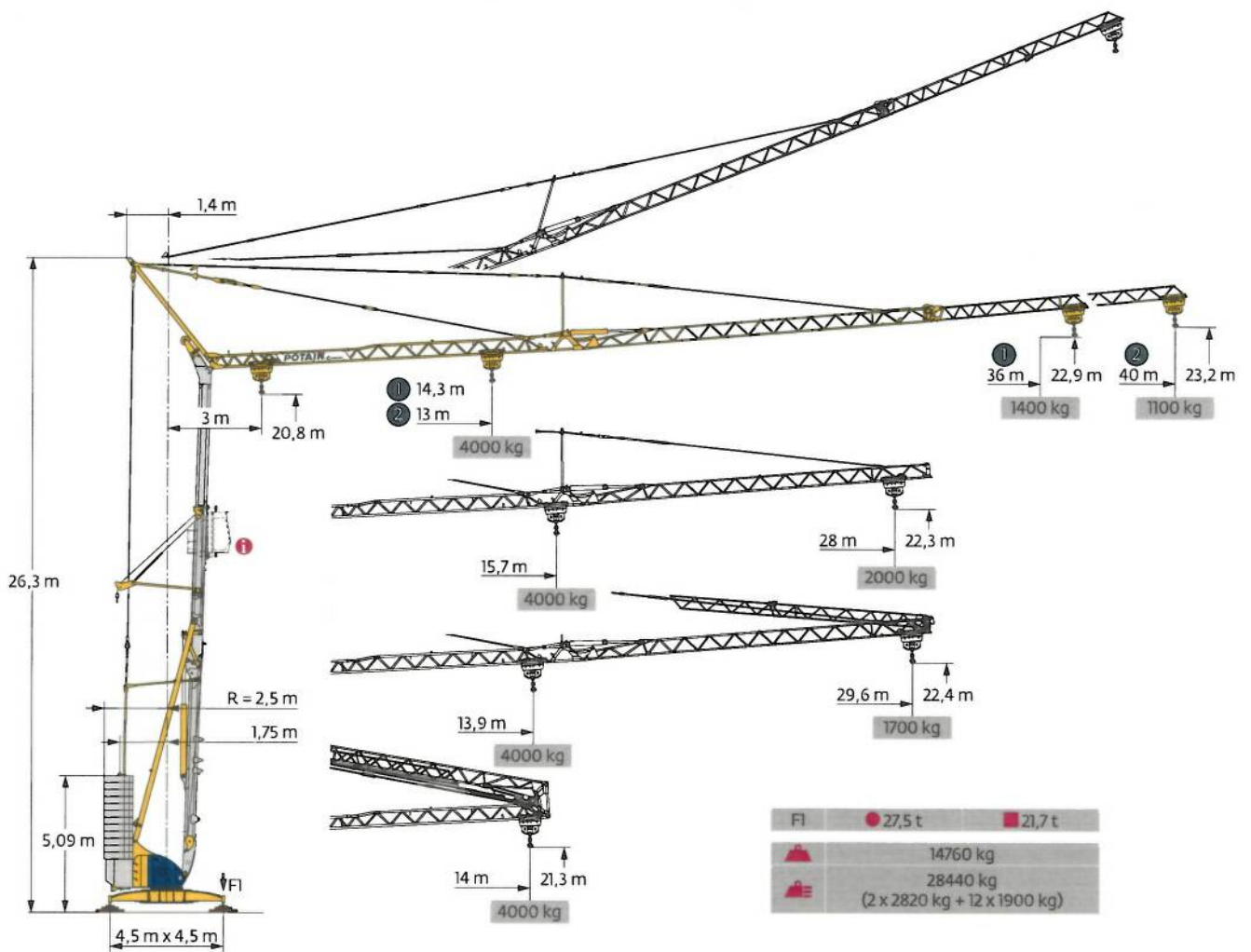
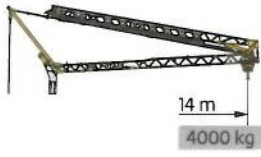


Potain Igo 50



Courbes de charges / Lastkurven / Load curves / Curvas de cargas / Curve di carico
 Curvas de carga / Кривые нагрузок



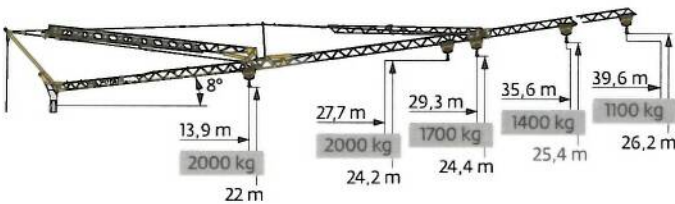
| | | | |
|------|---|--------|---------|
| 40 m | 3 | ▶ 14 m | 4000 kg |
| | | | 2000 kg |
| | | | 2000 kg |
| 36 m | 3 | ▶ 14 m | 4000 kg |
| | | | 2000 kg |
| | | | 2000 kg |
| 28 m | 3 | ▶ 14 m | 4000 kg |
| | | | 2000 kg |
| | | | 2000 kg |



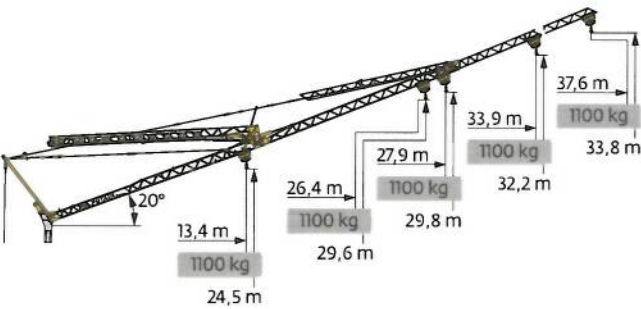
| | | | | | | | | | | | | | | | | | | |
|---|------|----|----|----|----|----|----|----|----|------|----|----|----|----|----|----|----|----|
| 3 | ▶ 13 | 14 | 15 | 16 | 17 | 18 | 19 | 20 | 23 | 24,2 | 25 | 27 | 30 | 32 | 35 | 37 | 40 | m |
| | | | | | | | | | | | | | | | | | | kg |
| | | | | | | | | | | | | | | | | | | kg |
| | | | | | | | | | | | | | | | | | | kg |
| | | | | | | | | | | | | | | | | | | kg |
| | | | | | | | | | | | | | | | | | | kg |



| | | | | | | | | | | | | | | | |
|------|---|--------|----|----|----|----|----|----|----|------|----|------|----|------|----|
| 40 m | 3 | ▶ 13,9 | 15 | 16 | 17 | 18 | 19 | 20 | 22 | 24,7 | 25 | 25,8 | 27 | 29,6 | m |
| | | | | | | | | | | | | | | | kg |
| | | | | | | | | | | | | | | | kg |
| | | | | | | | | | | | | | | | kg |
| | | | | | | | | | | | | | | | kg |










| | | | | | | | | | | | |
|------|---|--------|------|----|----|----|----|----|----|------|----|
| 40 m | 3 | ▶ 22,7 | 23,9 | 25 | 27 | 30 | 32 | 35 | 37 | 39,6 | m |
| | | | | | | | | | | | kg |
| | | | | | | | | | | | kg |
| | | | | | | | | | | | kg |
| | | | | | | | | | | | kg |
| | | | | | | | | | | | kg |
| | | | | | | | | | | | kg |
| | | | | | | | | | | | kg |
| | | | | | | | | | | | kg |
| | | | | | | | | | | | kg |
| | | | | | | | | | | | kg |
| | | | | | | | | | | | kg |
| | | | | | | | | | | | kg |
| | | | | | | | | | | | kg |
| | | | | | | | | | | | kg |
| | | | | | | | | | | | kg |
| | | | | | | | | | | | kg |
| | | | | | | | | | | | kg |
| | | | | | | | | | | | kg |



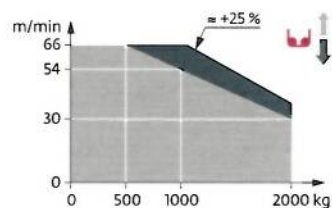
| | | | | |
|------|---|---|------|----|
| 40 m | 3 | ▶ | 37,6 | m |
| | | | 1000 | kg |
| | | | 1100 | kg |
| | | | | kg |
| | | | | kg |
| | | | | kg |
| | | | | kg |
| | | | | kg |
| | | | | kg |
| | | | | kg |
| | | | | kg |
| | | | | kg |
| | | | | kg |
| | | | | kg |
| | | | | kg |
| | | | | kg |
| | | | | kg |
| | | | | kg |
| | | | | kg |
| | | | | kg |
| | | | | kg |
| | | | | kg |

Mécanismes / Triebwerke / Mechanisms / Mecanismos / Meccanismi
 Mecanismos / Механизмы

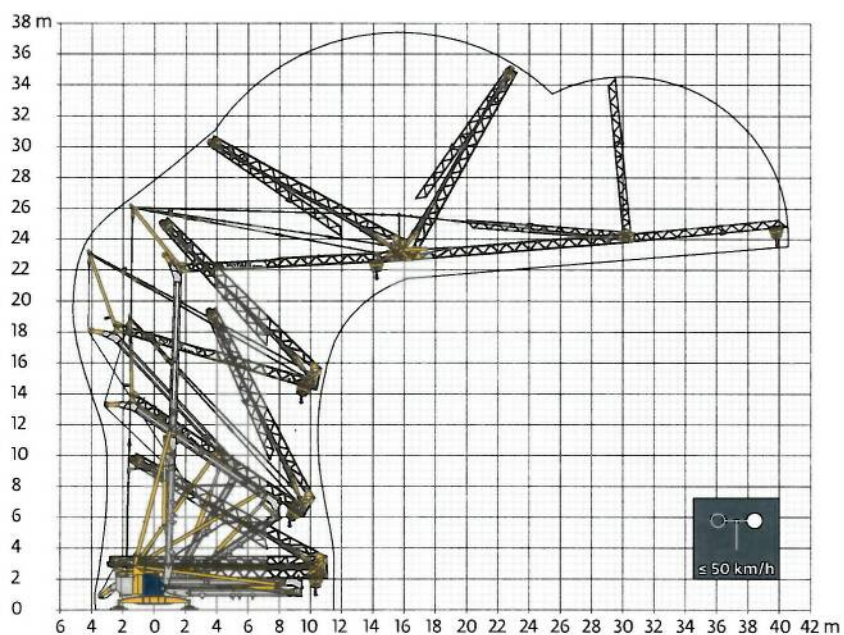
| 400 V - 50 Hz 480 V - 60 Hz | |  | | | | |  | | | | | ch - PS hp | kW | |
|---|-------------------------|---|--|------|------|------|---|------|------|------|------|---------------|-----|----|
|  | 15 LVF 10 Optima | m/min | 3,6 | 18 | 30 | 54 | 66 | 1,8 | 9 | 15 | 27 | 33 | 15 | 11 |
| | | kg | 2000 | 2000 | 2000 | 1000 | 500 | 4000 | 4000 | 4000 | 2000 | 1000 | | |
|  | 3 DVF 5 | m/min | 15-30-45 (0 → 1000kg) 15-30-41 (1000 → 4000 kg) | | | | | | | | | 3 | 2,2 | |
|  | RVF 51 Optima+ | tr/min U/min rpm | 0 → 0,8 | | | | | | | | | 5,5 | 4 | |

|  IEC 60204-32 |  kVA |
|--|---|
| 400 V (+10% -10%) 50 Hz 480 V (+6% -10%) 60 Hz | 23 kVA |

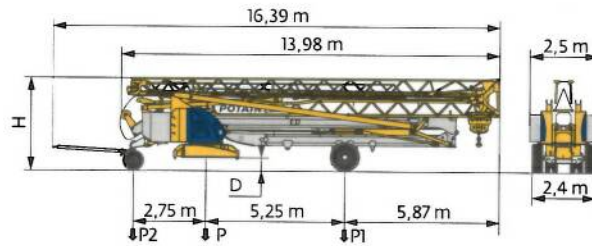
15 LVF 10 Optima



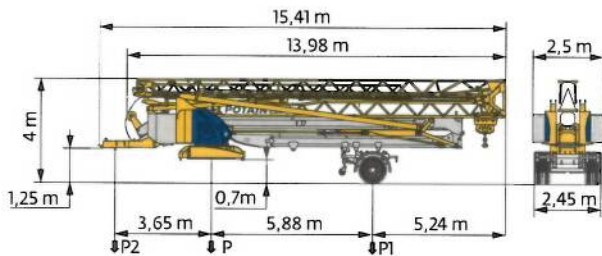
Montage / Montage / Erection / Montaje / Montaggio
 Montagem / Монтаж



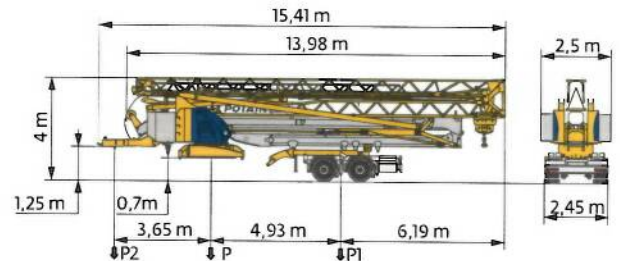
Transport / Transport / Transport / Transporte / Trasporto
Transporte / Транспортировка



| | km/h | D (m) | H (m) | P (kg) | P1 (kg) | P2 (kg) |
|------------|------|----------|-----------|--------|---------|---------|
| DJ100/S120 | 10 | 0,35/0,2 | 3,57/3,42 | 21655 | 11725 | 9930 |
| DJ105/S125 | 25 | 0,35/0,2 | 3,57/3,42 | 21945 | 11945 | 10000 |



| | km/h | P (kg) | P1 (kg) | P2 (kg) |
|------------|------|--------|---------|---------|
| SL121/J135 | 25 | 22495 | 13000 | 9495 |



| | km/h | P (kg) | P1 (kg) | P2 (kg) |
|-------------|------|--------|---------|---------|
| SL121/S215M | 25 | 23740 | 15490 | 8250 |
| SL122/J215M | 80 | 23650 | 15400 | 8250 |

| | FR | DE | EN | ES | IT | PT | RU |
|----------|--|--|---|---|---|--|---|
| R | Rayon de giration | Schwenk radius | Rear slewing radius | Radio de giro | Raggio di rotazione | Raio de rotação | Задний габарит |
| i | Nous consulter | Auf Anfrage | Consult us | Consultarnos | Consultateci | Consultar-nos | Проконсультируйтесь у нас |
| e | Réactions en service | Reaktionskräfte in Betrieb | Reactions in service | Reacciones en servicio | Reazioni in servizio | Reacções em serviço | Реакция при работе |
| ■ | Réactions hors service | Reaktionskräfte außer Betrieb | Reactions out of service | Reacciones fuera de servicio | Reazioni fuori servizio | Reacções fora de serviço | Реакция в покое |
| ▲ | Poids à vide, sans lest, sans trains de transport, avec flèche maxi et hauteur standard | Gewicht ohne Last, ohne Ballast, ohne Transportachsen, mit max. Auslager und Standardhöhe | Weight without load, without ballast, without transport axes, with max. jib and standard height | Peso en vacío, sin lastre, sin trenes de transporte con flecha y altura estándar | Peso a vuoto, senza zavorra, senza assali di trasporto, con braccio max e altezza standard | Peso em vazio, sem lastro, sem eixos de transporte com lança máxima e altura standard. | Вес без груза, без балласта, без осей для транспортировки, с максимальным вылетом стрелы и стандартной высотой |
| ■ | Poids total du lest | Ballast-Gesamtgewicht | Total ballast weight | Peso total del lastre | Peso totale della zavorra | Peso total do lastro | Общий вес балласта |
| ⬆ | Levage | Heben | Hoisting | Elevación | Sollevamento | Elevação | Подъем |
| ■ | Distribution | Katzfahren | Trolleying | Distribución | Distribuzione | Distribuição | Перемещение по стреле |
| ⬆ | Orientation | Schwenken | Slewing | Orientación | Rotazione | Rotação | Поворот |
| ⚡ | Puissance nominale | Nennleistung | Rated power | Potencia nominal | Potenza nominale | Potência nominal | Номинальная мощность |
| ⚠ | Document commercial non contractuel. Pour toute information technique se référer à la notice correspondante. | Unverbindliches Vertriebsdokument. Für technische Informationen, siehe die entsprechenden Anweisungen. | This commercial document is not legally binding. For any technical information, please refer to the corresponding instructions. | Documento comercial no contractual. Para cualquier información técnica, ver la noticia correspondiente. | Documento commerciale non vincolante, per tutte le informazioni tecniche fare riferimento al catalogo istruzioni. | Documento comercial não contratual. Para qualquer informação técnica complementar consultar as respectivas instruções. | Этот коммерческий документ не является юридически обязательным. Для получения технической информации, см. соответствующие инструкции. |

BISCHAG

- Bau- und Industriekrane
- Verkauf-Vermietung-Service
- Hebebühnen
- Schere-Bühnen
- Teleskop-Arbeitsbühnen
- Verkauf-Vermietung
- Transporte
- Spezialtransporte
- Greiferarbeiten
- Seilwindarbeiten
- LKW mit Ladekran

Grienstrasse 17
4227 Büsserach
Telefon 061 781 55 11
Fax 061 781 55 12
www.bischag.ch



Manitowoc - Americas
Manitowoc, Wisconsin, USA
Tel: +1 920 684 6621
Fax: +1 920 683 6277

Shady Grove, Pennsylvania, USA
Tel: +1 717 597 8121
Fax: +1 717 597 4062

Manitowoc - Europe, Middle East & Africa
Ecully, France
Tel: +33 (0)4 72 18 20 20
Fax: +33 (0)4 72 18 20 00

Manitowoc - Asia & Pacific
Shanghai, China
Tel: +86 21 6457 0066
Fax: +86 21 6457 4955

Ref. Igo 50 2003 48 - 11